

Stitching Cards

Flower bookmark

These pattern details should be used in conjunction with the Stitching Cards General Instructions.

“Out at ...” means passing the needle through a hole from the back of the card to the front.

“In at ...” means passing the needle through a hole from the front of the card to the back.

The design is worked in green thread (Kreinik 1 ply polyester metallic cord 008C), gold (002C) and red (003C on white card).

Flowers.

Centre.

Gold thread.

See flower 1.

Out at 1 in at 2.

Out at 3 in at 4.

Out at 5 in at 6.

Out at 7 in at 8.

Out at 9 in at 10.

Petals.

Red thread.

See flower 2.

Petal 1.

Out at A in at B.

Out at C in at D.

Out at E in at F.

Continue this sequence until petal 1 is complete using the finished illustration as a guide.

Stitch the other petals in a similar way using the finished illustration as a guide.

Flower bud.

Flower.

Red thread.

Out at G in at H.

Out at I in at J.

Out at K in at L.

Continue this sequence until the flower is complete using the finished illustration as a guide.

Calyx.

Green thread.

Section 1.

Out at M in at N.

Out at O in at P.

Out at Q in at H

Continue this sequence until section 1 is

complete using the finished illustration as a guide.

Stitch section 2 in a similar way.

Small bud.

Green thread..

Out at R in at S.

Out at T in at U.

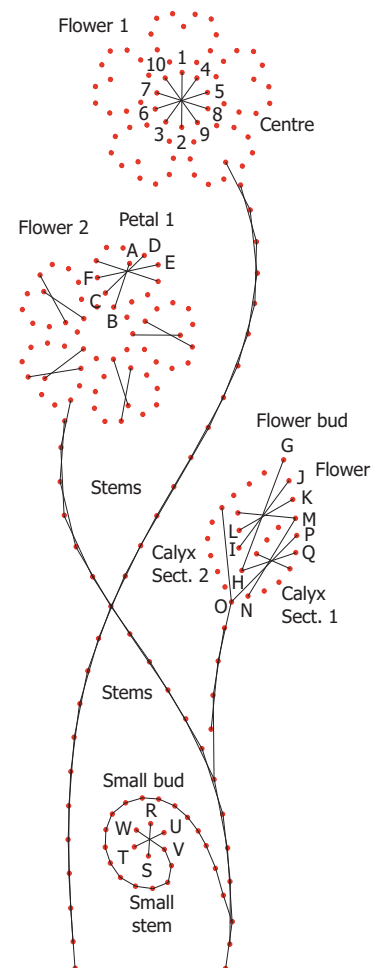
Out at V in at W.

Stems.

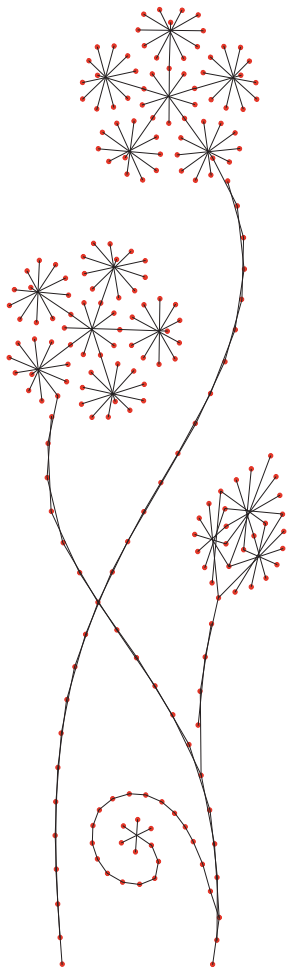
Green thread.

Work the small stem in backstitch.

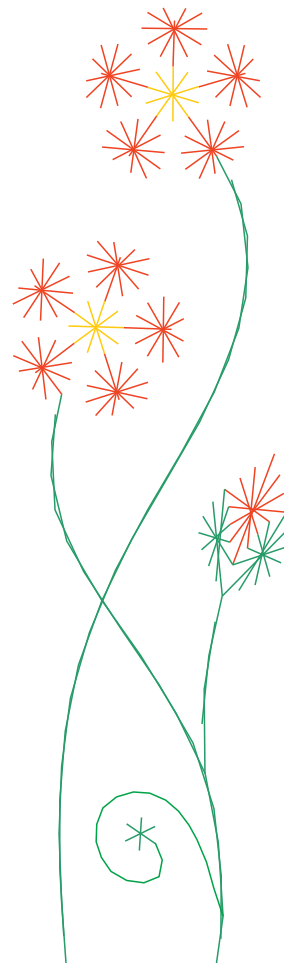
Work the other stems in stem stitch.



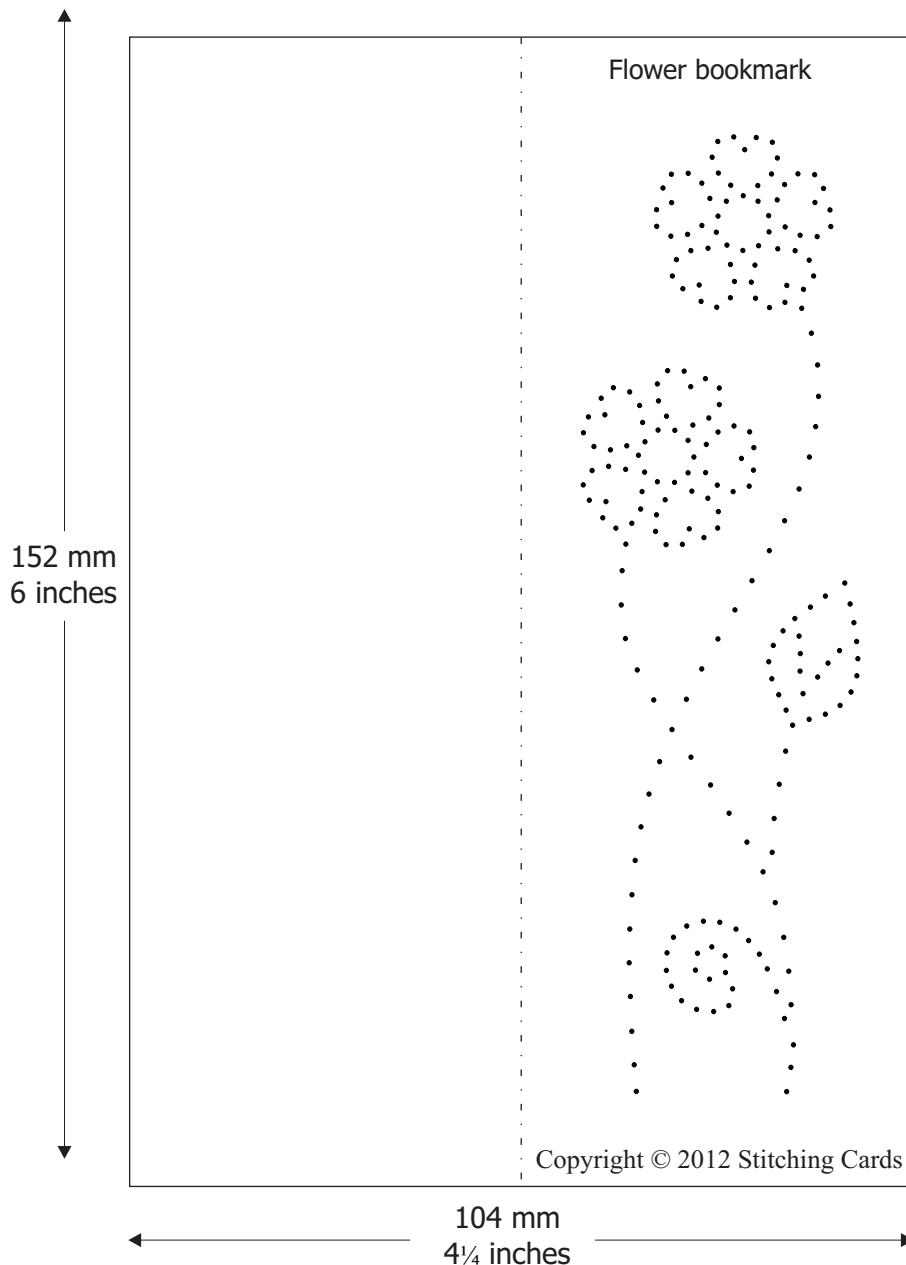
Flower bookmark



Copyright © 2012 Stitching Cards



Copyright © 2012 Stitching Cards



When printing the pricking pattern please set your printer scaling to "None" if available. If there is a "Fit to page" setting on your printer settings then make sure this is not selected.
 The page is based on an A4 sheet (210 x 297 mm) but should print correctly on different sized sheets if the scaling is set as suggested above. The pattern size is a guide and may vary slightly on your printer. Centre the pattern on your card if necessary.

This free sample pattern was downloaded from www.stitchingcards.com. If you would like to be informed when new Stitching Cards designs are ready for sale at www.stitchingcards.com then please visit our web site and join our mailing list.

These instructions are copyright © 2012 Stitching Cards.

Published at www.stitchingcards.com. E-mail info@stitchingcards.com

This thistle Stitching Cards pattern can be used to produce bookmarks / cards for personal pleasure and personal giving. Any card made from this pattern and offered for sale must include an official copyright sticker. Copyright stickers can be purchased from www.stitchingcards.com.

Reproduction of this thistle pattern is allowed for personal or teaching use. This copyright notice should appear on all copies of the pattern. This pattern is exclusively available from www.stitchingcards.com.

Stitching Cards General Instructions

Published at www.stitchingcards.com

You will need a suitable pricking mat. This could be foam or felt but should allow easy penetration of the pricking pin whilst protecting your work surface. Lay your blank card onto the pricking mat with the right side (outside) of the card facing upwards.

Place the pricking pattern on the card in the required position. Use a fine pricking tool to pierce through the pattern and the card. If you do not have a purpose made pricking tool then a hat pin or similar can be used.

Remove the pricking pattern. The pricked holes can be seen on the card.

Turn the card over so the wrong side (inside) is uppermost.. Select a suitable thread such as Kreinik metallic cord. Use a Number 10 embroidery needle. Use a length of thread that you are comfortable with. We suggest using about a third of a metre (14 inches). Secure the end of the thread to the card with adhesive tape. Pass the needle through the start hole from the back to the front of the card.

Follow the instruction diagram. Refer to the finished diagram from time to time to see the complete stitching required.

When the thread on your needle runs out secure the end of the thread with adhesive tape on the back of the card and start a new thread.

Continue to follow the instructions a section at a time. Some patterns uses beads. These are held in place with stitching. You may need to use a beading needle if the bead holes are very fine.

If you are using a double fold card (a card with three panels) then place the completed card on your work surface with the right side facing downwards. Fold the left-hand panel across to cover and hide the back of the stitching work. Secure the panel in place with double-sided adhesive tape or card adhesive. The stitching of your card is now complete. You may choose to add a suitable greeting with stickers, stamping or handwriting.

Stitching Terminology.

Where the instructions say “Out at” this means passing the needle through a hole from the back of the card to the front.

Where the instructions say “In at” this means passing the needle through a hole from the front of the card to the back.

Where the design calls for back stitch this works as follows:

Out at 2 in at 1

Out at 3 in at 2

Out at 4 in at 3



Where the design calls for stem stitch this works as follows:

Out at 1 in at 3

Out at 2 in at 4

Out at 3 in at 5



Copyright © 2012 Stitching Cards

Web site www.stitchingcards.com

Stitching Cards, PO Box 795, St. Albans, AL2 2ZQ, UK